



UPHOLSTERY COLORS



SOFT BEIGE



FLINT GREY



SLATE BLUE



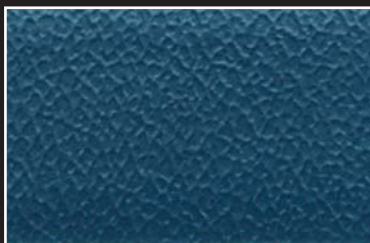
TEAL



DUSTY MAUVE



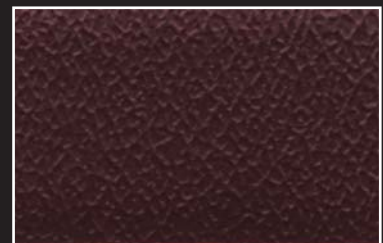
GUNMETAL



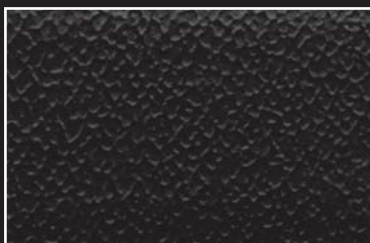
DELFT



FOREST



BURGUNDY



BLACK



WEDGEWOOD*
DESIGNER COLOR



PUTTY*
DESIGNER COLOR

* Contains antimicrobial finish providing additional protection against bacteria and mildew growth, staining and abrasion.

Swatch colors above may not be 100% accurate to actual product. See your representative for actual fabric samples.

Specifications

Blickman colors offer these important features:

- Sulfide Stain Resistant
- Mildew Resistant
- Resistant to color fading
- UV Stabilized (500 hrs.)
- -20 degrees F Cold Crack
- Cleans easily with mild soap and water

Blickman offers standard colors manufactured to meet flammability* requirements contained in these specifications:

- California Technical Bulletin 117, Sec. E
- NY/NJ Port Authority FTMX 191-5903
- Boston Fire Dept., 1X-1, 5903
- CID A-A-2950-A (Federal Standard 191A test method 5903)
- BIFMA (Screen Test, Sec. 4.6.1.1)
- Upholstery requirements of FAR 25.853
- Automotive (MVS-302)
- May comply with California 133 when tested with suitable components

Blickman offers designer colors manufactured to meet flammability* requirements contained in these specifications:

- California Technical Bulletin 117, Sec. E
- NY/NJ Port Authority FTMX 191-5903
- Boston Fire Dept., 1X-1, 5903
- CID A-A-2950-A (Federal Standard 191A test method 5903)
- BIFMA (Screen Test, Sec. 4.6.1.1)
- Upholstery requirements of FAR 25.853
- Automotive (MVS-302)
- May comply with California 133 when tested with suitable components

*This term and any corresponding data refer to typical performance in the specific tests indicated and should not be construed to imply the behavior of this or any other material under other fire conditions.

Upholstered seating products are also available at an additional cost for customers whose state fire code requires Cal. #133 foam. Please request this service when placing your order.

Blickman Customer Service:

Phone: 800-247-5070

201-909-0807

Fax: 201-909-0832

www.blickman.com or e-mail: info@blickman.com