

# BLICKMAN

## ***Personal Protective Equipment***

*For the safety of our healthcare workers*

**Includes:**

- Full Body Protection
- Facial Protection
- Additional Protection
- Protection Accessories



# THE BLICKMAN DIFFERENCE

- Our personal protective equipment (PPE) protects against airborne, bloodborne, and other types of pathogens and various hazards to ensure the safety of healthcare workers who may be exposed to infectious materials.
- We offer full body coverage from head to toe with bouffant covers, face protectants, gowns, gloves, and shoe covers.
- We offer accessories to aid in personal protection such as no-touch thermometers, water-soluble hamper bags, and disinfectant wipes.
- All Blickman PPE is intended for use in the medical industry and follows FDA and CDC guidelines meeting the specific performance standards for protection in the industry.

## *Key Products*

---



# ***Safety starts with protecting our healthcare workers.***

***The healthcare industry is one of the most hazardous work environments.***

Employees in this industry are constantly exposed to contact, droplet, and airborne hazards. For the safety of our healthcare workers, CDC Guidelines require the use of Personal Protective Equipment (PPE).

**Different areas require different levels of protection.**

The FDA recognizes standards set forth by the American National Standards Institute (ANSI) and the Association of the Advancement of Medical Instrumentation (AAMI).

ANSI/AAMI PB70:2012 describes the liquid barrier performance and classification of protective apparel and drapes intended for use in health care facilities.

The ANSI/AAMI specify test methods and performance results that yielded four levels of protection. Level 1 being the lowest level of protection, and Level 4 being the highest.



**Examples of healthcare settings where different levels of protection are required:**

**Patient care areas** with light to moderate fluid risk are recommended to use AAMI Level 1 or 2 gowns.

**Emergency Departments** fluid risk is moderate to high and therefore AAMI Levels 2 to 3 gowns are recommended.

**Endo/GI Labs** have high fluid risks. Therefore, it is recommended to wear AAMI level 4 gowns.

To learn more about PPE Guidelines please visit: <https://www.cdc.gov> or <https://www.fda.gov>

# AAMI GOWN LEVELS



ANSI/AAMI PB70 Barrier Performance	Material	Test Method	Liquid Challenge	Requirement	Anticipated Fluid Exposure	Application
<b>AAMI Level 1</b> "fluid resistant"	Often single or double layer fabric (PP + PE)	Water penetration AATCC 42	<b>AATCC 42</b> – Measures resistance to liquid penetration of <u>water</u>	Water impact < 4.5 g	<b>Minimal</b> fluid levels	Basic Care
<b>AAMI Level 2</b> "fluid resistant"	Often three layer fabric (SMS)	Water penetration AATCC 42  Hydrostatic pressure AATCC 127	<b>AATCC 42</b> – Measures resistance to liquid penetration of <u>water</u>  <b>AATCC 127</b> – Measures resistance to liquid penetration of <u>water</u> under constant and increasing hydrostatic pressure	Spray impact < 1.0 g  Hydrostatic Pressure > 20 cm	<b>Low</b> fluid levels	Blood Draw Suturing ICU Pathology Labs
<b>AAMI Level 3</b> "fluid resistant"	Often four layer fabric (SMMS)	Water penetration AATCC 42  Hydrostatic pressure AATCC 127	<b>AATCC 42</b> – Measures resistance to liquid penetration of <u>water</u>  <b>AATCC 127</b> – Measures resistance to liquid penetration of <u>water</u> under constant and increasing hydrostatic pressure	Spray impact < 1.0 g  Hydrostatic pressure > 50 cm	<b>Moderate</b> fluid levels	Arterial Blood Draw Trauma & ER IV Insertion
<b>AAMI Level 4</b> "fluid impermeable"	Often five layer fabric (SSMMS)	Synthetic blood penetration ASTM F1671  Viral penetration ASTM F1671	<b>ASTM F1671</b> – Measures the resistance to penetration by bloodborne pathogens using <u>surrogate blood</u>  <b>ASTM F1671</b> – Measures the resistance to viral penetration using <u>Bacteriophage Phi-X174</u>	Passed: no penetration at 2 psi (13.8kPa)	<b>High</b> fluid levels	Bloodborne Infectious Diseases  Pathogen Resistance

Table: Summary of tests and classifications recognized by the FDA and described by ANSI/AAMI PB70:2012.

# GOWN MATERIALS

*Listed in order of increased protection*

## POLYETHYLENE FABRIC

---

### **Polyethylene (PE):**

Single layer of plastic film.

Thin, fluid resistant material, much like plastic. Minimal breathability, but very durable.

### **Chlorinated PE:**

Chlorinated plastic film.

Provides excellent protection at an affordable cost.

## POLYPROPYLENE FABRIC

---

### **Spunbond Polypropylene (PP):**

Single layer of 100% polypropylene nonwoven fabric.

Soft cloth-like fabric meant for minimal fluid exposures, that is affordable, comfortable, and breathable.

### **Coated Polypropylene (PP+PE):**

Two layered fabric: soft spunbond polypropylene coated with a layer of polyethylene (plastic) film.

Lightweight material with increased fluid resistance (often used for AAMI Level 1 gowns).

### **SFS Fabric:**

Three layered fabric: Spunbond PP + Polyester Film + Spunbond PP.

Spunbond PP Advantages: High tensile stretch, flexibility, abrasion resistance, and breathability.

Polyester Film Advantages: Fluid resistant, lightweight, and durable.

Optimal combination of protection and comfort (soft, lightweight, strong, fluid resistant, breathable) meant for extended use under low to moderate fluid exposure conditions (often used for AAMI Level 2 and 3 gowns).

### **SMS Fabric:**

Three layered, 100% polypropylene fabric: Spunbond PP + Meltblown PP + Spunbond PP.

Spunbond Advantages: High tensile stretch, flexibility, and abrasion resistance.

Meltblown Advantages: Ultrafine pore structure and effective absorption.

Optimal combination of protection and comfort (soft, strong, fluid resistant, antistatic, breathable) meant for extended use under low to moderate fluid exposure conditions (often used for AAMI Level 2 and 3 gowns).

### **Polycoated SMS Fabric:**

Four layered fabric: SMS fabric coated with a layer of polyethylene (plastic) film. Provides maximum protection from potential hazards associated with handling Chemotherapy agents. This material is used for Chemotherapy gowns and is tested against specific Chemotherapy drugs (see Chemotherapy gowns for more details).

### **SMMS Fabric:**

Four layered, 100% PP fabric: Spunbond PP + Meltblown PP x 2 + Spunbond PP.

Similar to SMS fabric with an added layer of fluid resistance. Ideal for extended use under moderate to high fluid exposure conditions (often used for AAMI Level 3 and 4 gowns).

### **Spun-Melt (SSMMS) Fabric:**

Five layered, 100% Polypropylene fabric: Spunbond PP x 2 + Meltblown PP x 2 + Spunbond PP.

This is a strong multilayer fabric with excellent filtration that is ideal for higher levels of fluid exposure (often used for AAMI Level 4 gowns).

# COMMON MATERIALS USED

*Listed in order of increased protection*



## **Chlorinated PE:**

Chlorinated plastic film. Provides excellent protection at an affordable cost.



## **Polyethylene (PE):**

Single layer of plastic film. Thin, fluid resistant material, much like plastic. Minimal breathability, but very durable.



## **Spunbond Polypropylene (PP):**

Single layer of 100% polypropylene nonwoven fabric. Soft cloth-like fabric meant for minimal fluid exposures.



## **Coated Polypropylene (PP+PE):**

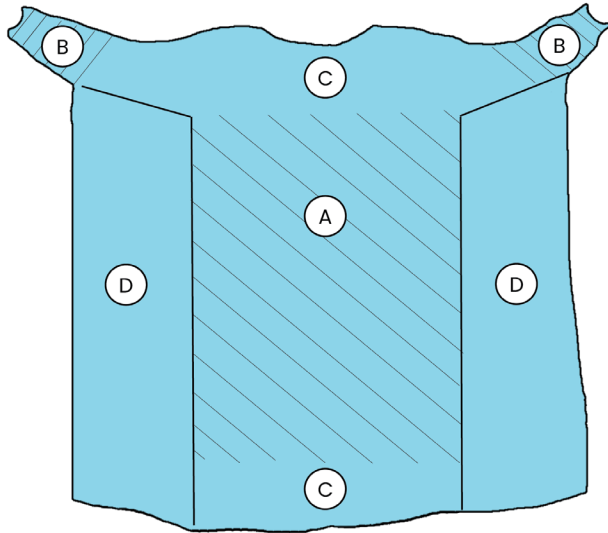
Two layered fabric: soft spunbond polypropylene coated with a layer of polyethylene (plastic) film.



## **SMS Fabric**

Three layered, 100% polypropylene fabric: Spunbond PP + Meltblown PP + Spunbond PP. Increased protection and comfort.

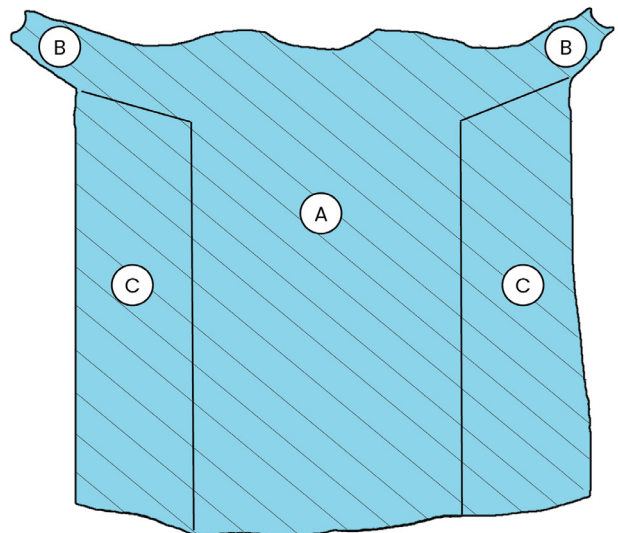
# GOWN CRITICAL ZONES



## Surgical Gown

*Areas A and B on surgical gowns are considered critical zones.*

The entire front of the gown (areas A, B, and C) from top of the shoulders to knees and from the wrist cuff to above the elbow is required to have a barrier performance of at least Level 1. The back of the surgical gown (area D) may be unprotected.



## Isolation Gown

*All areas of the isolation gown are considered critical zones.*

The entire gown (front and back: areas A, B, and C), including seams but excluding cuff, hems, and bindings, is required to have a performance of at least Level 1.

# GOWN STERILITY

Our gowns are intended for use in medical environments. Following FDA and CDC guidelines, all Blickman gowns are sold as sterile equipment. We ship our gowns in individual packaging to ensure sterility until end users open for single use.

# Common PPE Misconceptions

## Protection Level Misunderstanding

A common misunderstanding among many end users is that they are protected from blood, body fluids, and other potential infectious materials, when they wear any type of fluid resistant garment or surgical or isolation gown.

ANSI/AAMI PB70 Level 1, 2, and 3 surgical/isolation gown testing requirements only use water as a challenge. The surface tension of water is much higher than that of blood; blood can penetrate through fabrics more readily than water.

Only Level 4 gowns are tested for viral penetration resistance, and therefore only Level 4 garments are considered impermeable to viral penetration using ASTM F1671.

## Gown Naming Misunderstanding

Regardless of how the product is named (i.e. isolation gown, surgical gown, protection gown), when choosing gowns, look for desired AAMI level. Product names are not standardized.





### ISOLATION GOWNS

**Description:** We offer disposable and reusable latex-free isolation gowns. They come in multiple styles and sizes, and a variety of materials and colors. We offer disposable isolation gowns in all AAMI levels and reusable isolation gowns in AAMI levels 1 and 2.

#### Styles

All isolation gowns are available in various wrist, neck, and back style options.

##### Wrist Style Options

- Elastic
- Hybrid elastic wrist & thumb-lock
- Thumb-hook
- Knit cuff

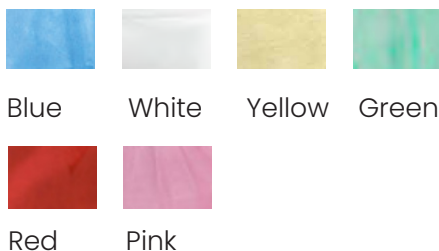
##### Neck Style Options

- Over-the-head
- Tape tab
- Tie-neck
- Hook & Loop

##### Back Style Options

- Full Back
- Open Back
- Overlapping Back

##### Color Options



Note: Pink and red are for large quantity orders only.

# ISOLATION GOWN STYLES

## Back Styles

---

Open Back



Overlapping Back



Full Back



## Neck Styles

---

Over the head



Tie



Tape Tab



## Wrist Styles

---

Elastic



Thumb Hook



Knit Cuff



## ISOLATION GOWNS

**Description:** We offer disposable and reusable latex-free isolation gowns. Pick your size and AAMI Level below. When ordering, specify your style requirements.

### DISPOSABLE

#### AAMI Level 1

- **QTY:** 100 Gowns
- **Weight:** 30gsm
- **Material:** Chlorinated PE, SFS, or SMS

AAMI Level 1			
Size	Chlorinated PE	SFS	SMS
R	2703000000	2703410000	2703010000
L	270300000L	270341000L	270301000L
XL	27030000XL	27034100XL	27030100XL
XXL	27030000XXL	27034100XXL	27030100XXL

#### AAMI Level 2

- **QTY:** 50 Gowns
- **Weight:** 35gsm
- **Material:** PP+PE, SFS, or SMS

AAMI Level 2			
Size	PP+PE	SFS	SMS
R	2703001000	2703411000	2703011000
L	270300100L	270341100L	270301100L
XL	27030010XL	27034110XL	27030110XL
XXL	27030010XXL	27034110XXL	27030110XXL

#### AAMI Level 3

- **QTY:** 50 Gowns
- **Weight:** 45gsm
- **Material:** PP+PE, SFS, SMS, or SMMS

AAMI Level 3				
Size	PP+PE	SFS	SMS	SMMS
R	2703002000	2703412000	2703012000	2703422000
L	270300200L	270341200L	270301200L	270342200L
XL	27030020XL	27034120XL	27030120XL	27034220XL
XXL	27030020XXL	27034120XXL	27030120XXL	27034220XXL

#### AAMI Level 4

- **QTY:** 50 Gowns
- **Weight:** 55gsm
- **Material:** SSMMMS

AAMI Level 4	
Size	SSMMMS
R	2703003000
L	270300300L
XL	27030030XL
XXL	27030030XXL

### REUSABLE

#### AAMI Level 1 & 2

- **QTY:** 50 Gowns
- **Material:** 100% Polyester Fluid-Resistant Material

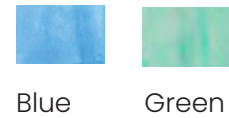
Size	AAMI Level 1	AAMI Level 2
	100% Polyester Fluid Resistant Material	
R	2703R00000	2703R01000
L	2703R0000L	2703R0100L
XL	2703R000XL	2703R010XL
XXL	2703R000XXL	2703R010XXL

### SURGICAL GOWNS

**Description:** We offer disposable and reusable latex-free surgical gowns designed to be worn by healthcare personnel during surgical procedures. Each gown features a long hook & loop neck closure for an easily adjustable, gap-free custom fit. Cuffs are long and tight polyester knit for a better fit and retention. We offer disposable isolation gowns in all AAMI levels and reusable isolation gowns in AAMI levels 1 and 2.



**QTY:** 50 Gowns  
**Color:** Blue or green  
**Weight:**  
 (Disposable gowns)  
 AAMI Level 1: 30gsm  
 AAMI Level 2: 35gsm  
 AAMI Level 3: 45gsm  
 AAMI Level 4: 55gsm  
**Material:**  
 (Disposable gowns)  
 SMS, SMMS, or SSMMS



#### DISPOSABLE

Size	AAMI Level 1	AAMI Level 2
	SMS	SMS
R	2703200000	2703201000
L	270320000L	270320100L
XL	27032000XL	27032010XL
XXL	2703200XXL	2703201XXL

Size	AAMI Level 3	
	SMS	SMMS
R	2703202000	2703242000
L	270320200L	270324200L
XL	27032020XL	27032420XL
XXL	2703202XXL	2703242XXL

Size	AAMI Level 4
	SSMMS
R	2703203000
L	270320300L
XL	27032030XL
XXL	2703203XXL

#### REUSABLE

Size	AAMI Level 1	AAMI Level 2
	99% Polyester with 1% Carbon Material	
R	27032R0000	27032R1000
L	27032R000L	27032R100L
XL	27032R00XL	27032R10XL
XXL	27032R0XXL	27032R1XXL

### PROTECTION GOWNS

**Description:** We offer disposable and reusable protection gowns. White disposable hooded coveralls suitable for hospital settings requiring full body coverage. They are one piece zip up for easy donning and doffing. Freedom of movement with an elastic waist for better positioned fit. AAMI Levels 1 and 2 available.



#### DISPOSABLE

##### AAMI Level 1

Size	PP+PE
R	2703100000
L	270310000L
XL	27031000XL
XXL	2703100XXL

##### AAMI Level 2

Size	PP+PE	SFS
R	2703101000	2703141000
L	270310100L	270314100L
XL	27031010XL	27031410XL
XXL	2703101XXL	2703141XXL

#### QTY:

AAMI Level 1: 25 gowns

AAMI Level 2: 50 gowns

#### Weight:

AAMI Level 1: 60gsm

AAMI Level 2: 70gsm

**Material:** PP+PE or SFS Fabric

#### REUSABLE

##### AAMI Level 1

##### AAMI Level 2

Size	Synthetic Fiber Material Coated with Antimicrobial Polyurethane	
R	27031R0000	27031R1000
L	27031R000L	27031R100L
XL	27031R00XL	27031R10XL
XXL	27031R0XXL	27031R1XXL

### CHEMOTHERAPY GOWNS

**Description:** Our chemotherapy gowns are blue polyethylene coated SMS gowns suitable for healthcare personnel working in oncology units. They are disposable and latex free. They cover the full back and feature knit cuffs, neck ties, and waist ties. We offer four levels of protection.



All of our chemotherapy gowns pass the ASTM F739-12, which is the standard test method for permeation of liquids and gases through protective clothing materials under conditions of continuous contact.

Our chemotherapy gowns protect against the chemotherapy drugs listed below.

\*The gowns that protect against 11 drugs do not include protection against Methotrexate.

- Carmustine
- Cisplatin
- Cyclophosphamide
- Dacarbazine
- Doxorubicin Hydrochloride
- Etoposide
- Fluorouracil
- **Methotrexate\***
- Mitomycin C
- Paclitaxel
- Thiotepa
- Vincristine Sulfate

**QTY:** 50 gowns  
**Weight:** 48gsm  
**Material:** PE coated SMS



Neck Tie



Waist Tie



Knit Cuff

#### Chemotherapy Gown that Protects Against 11 Drugs

Size	Passes ASTM F739-12	Passes ASTM F739-12 & USP <800> Guidelines
R	2703C00000	2703C40000
L	2703C0000L	2703C4000L
XL	2703C000XL	2703C400XL
XXL	2703C00XXL	2703C40XXL

#### Chemotherapy Gowns that Protect Against 12 Drugs

Size	Passes ASTM F739-12	Passes ASTM F739-12 & USP <800> Guidelines
R	2703C10000	2703C20000
L	2703C1000L	2703C2000L
XL	2703C100XL	2703C200XL
XXL	2703C10XXL	2703C20XXL

# 3 PLY DISPOSABLE MASKS

Block and Filtrate Large Particle Microorganisms



Loose Fitting

50  
Masks per Box

Part #	Description
2704000000	Non-Medical Mask
2704100000	Medical Mask
2704200000	LEVEL 1 Surgical Mask
2704600000	LEVEL 2 Surgical Mask
2704800000	LEVEL 3 Surgical Mask

Our three ply masks are designed to help block and filtrate transmission of large particle microorganisms and bodily fluids. They may also reduce the likelihood of hand-to-face contact.

### 3 Layers: Material and Functionality

**OUTER LAYER:**

Hydrophobic non-woven layer designed to repel water, blood, and other bodily fluids.

**MIDDLE LAYER:**

Meltblown layer designed to filter certain pathogens.

**INNER LAYER:**

Soft, absorbent non-woven layer designed to absorb moisture and sweat from exhalation.



### 5 Levels of Protection:

Level	Non-Medical YY/T 0969-2013	Medical GB/T 32610-2016	Surgical ASTM LEVEL 1	Surgical ASTM LEVEL 2	Surgical ASTM LEVEL 3
Fluid Resistance Efficiency	N/A	N/A	80mmHg Low Fluid Resistance	120mmHg Medium Fluid Resistance	160mmHg High Fluid Resistance
Bacterial Filtration Efficiency	BFE ≥ 90%	BFE ≥ 95%	BFE ≥ 95%	BFE ≥ 98%	BFE ≥ 98%
Particulate Filtration Efficiency	N/A	N/A	PFE ≥ 98% @ 0.1 micron	PFE ≥ 98% @ 0.1 micron	PFE ≥ 98% @ 0.1 micron
Breathability	N/A	N/A	< 4.0 mm H <sup>2</sup> O/cm <sup>2</sup>	< 5.0 mm H <sup>2</sup> O/cm <sup>2</sup>	< 5.0 mm H <sup>2</sup> O/cm <sup>2</sup>
Flame Spread	N/A	N/A	Class 1	Class 1	Class 1
Headstrap	Earloops	Earloops	Earloops	Earloops	Head Ties

# N95 DISPOSABLE MASKS

Block and Filtrate Small Airborne Particles  
*All Blickman N95 masks are FDA cleared for use as surgical use respiratory.*

20  
 Masks per Box



**N95FMX  
 Soft Style**



**9500-N95/910-N95  
 Hard Style**



Comfortable  
 Urethane  
 Nose foam

**Description:** Our N95 disposable masks are designed to block and filtrate small airborne particles and are fluid resistant. The filtration material of the mask is an electrostatic non-woven polypropylene fiber. To prevent particles from entering around the edges, our N95 masks tightly fit around the face with adjustable nose pieces and securely welded head straps.

Part #	Description	Size
2704300000	NIOSH N95 Respirator (N9500-N95); FDA Cleared	Medium/Large
2704301000	NIOSH N95 Respirator (N9500-N95S); FDA Cleared	Small
2704302000	NIOSH N95 Respirator (910-N95); FDA Cleared	Medium/Large
2704303000	NIOSH N95 Respirator (910-N95S); FDA Cleared	Small
2704304000	NIOSH N95 Flat Fold Respirator (910-N95FMX); FDA Cleared	Medium/Large

### N95

N = Not Resistant to Oil  
 95 = 95% Filtering Efficiency of 0.3 micron test particles

\*Should not be shared or reused. Not designed to properly fit children or people with facial hair.

\*The N95 respirator can make it more difficult for the wearer to breathe. People with chronic respiratory, cardiac, or other medical conditions that make it difficult to breathe should check with their health care provider before using an N95 respirator.

Visit the CDC website for more information and user instructions.





# PPE

## Full Face Protection

**Description:** For full face protection, utilize our face shield or safety goggles to cover eyes and other areas of the face. Both fit snugly against face and are adjustable for secure placement for any size.



### Face Shield

- Clear plastic face shield
- Completely covers sides and length of face
- Anti-fog



### Safety Goggles

- Flexible frame contours face without too much pressure
- Accommodates prescription glasses
- Fog and scratch resistant

Part #	Description	QTY/Package
2704700000	Clear Plastic Face Shield with Adjustable Band	1 Face Shield
2702000000	Clear Plastic Safety Goggles with Adjustable Strap	1 Goggle



**Bouffant Cover:** We offer bouffant covers in either PP material for no fluid exposure or SMS Material for moderate fluid exposure. They come in three standard sizes: R (21"), L (24"), and XL (28"); QTY/Package: 100 covers. Available in blue and red.

Bouffant Covers		
	PP	SMS
R	2708100000	2708101000
L	270810000L	270810100L
XL	27081000XL	27081010XL

**Description:** We offer shoe protection for all types of environments. Choose our shoe covers for no fluid exposure to minimal fluid exposure or our full coverage boots for moderate to heavy fluid exposure.



**Shoe Cover:** We offer Chlorinated PE, PE, and PP shoe covers for no fluid exposure environments and SMS shoe covers for minimal fluid exposure environments. Our shoe covers come in five standard sizes: Small, Medium, Large, Extra Large, Extra Extra Large. QTY/Box: 100 shoe covers.

### Shoe Covers

	No Fluid Exposure	Minimal Fluid Exposure
S	270800000S	270800100S
M	270800000M	270800100M
L	270800000L	270800100L
XL	27080000XL	27080010XL
XXL	2708000XXL	2708001XXL



**Full Coverage Boot:** We offer PP+ PE full coverage boots for moderate fluid exposure environments and PE coated SMS full coverage boots for heavy fluid exposure environments. They come in two standard sizes: Regular/Large and Extra Large. Choose between hook and loop closure or elastic ankle. QTY/Box: 100 boot covers.

### Full Coverage Boot

	Moderate Fluid Exposure	Heavy Fluid Exposure
R/L	270870000L	270870100L
XL	27087000XL	27087010XL

**Description:** We offer four different types of medical exam gloves that range from extra small to extra large. Choose between nitrile, polyurethane, vinyl and latex gloves. Quantity per box includes 100 gloves. All gloves are available in blue, white, purple, pink, black and red. All gloves are powder free. All non-latex gloves are latex-free. Contact us about chemo gloves.

### Nitrile Gloves

XS	27084000XS
S	270840000S
M	270840000M
L	270840000L
XL	27084000XL

### Polyurethane Gloves

XS	27085000XS
S	270850000S
M	270850000M
L	270850000L
XL	27085000XL

### Vinyl Gloves

XS	27086000XS
S	270860000S
M	270860000M
L	270860000L
XL	27086000XL

### Latex Gloves

XS	27082000XS
S	270820000S
M	270820000M
L	270820000L
XL	27082000XL



**Description:** We offer some additional accessories to help protect medical professionals, including alcohol wipes to use on exposed equipment, no touch thermometers to limit contact with ill patients, and water soluble hamper bags to limit contact with contaminated linens.



75% Isopropyl alcohol

### Package of Civil Use Disinfectant Wipes

# of Wipes	Part #
10	2706000000
50	2706000001
80	2706000002
100	2706000003
200	2706000004

### Part # 2706000005

Package of Medical Use Disinfectant Wipes, Quaternary Ammonium Wipes, quantity per package: 50 wipes.



### Container of Civil Use Disinfectant Wipes

# of Wipes	Part #
60	2706100000
100	2706100001

75% Isopropyl alcohol.



### Part # 2705000000

Digital, no touch, Infrared thermometer.



### Part # 98390000WS

Pack of 100 disposable, water soluble, plastic hamper bag.

\*Representative product/packaging images, actual product could look slightly different

Toll Free: (800) 247-5070  
Local: (973) 330-0557



[www.blickman.com](http://www.blickman.com)  
[info@blickman.com](mailto:info@blickman.com)

1099 Wall Street West, Suite 250A, Lyndhurst, NJ 07071